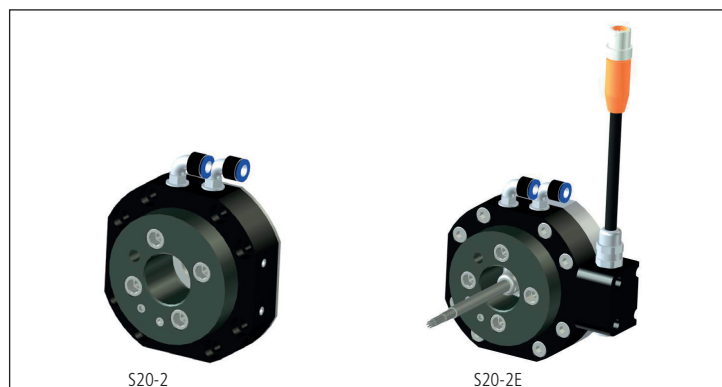


Swivel

S20

Tool changers | **Swivels** | Swivels with tool changer | Grippers | Hose packages | Valve units | Tool systems



Advantages

- Free rotation axis 6
- No limits to axis 4 and 5 when used with RSP hose packages
- Air, water, electrical and fieldbus signals
- Weld and servo power
- Low weight and high corrosion resistance
- Low maintenance and high uptime

Description

With Robot System Products swivels you can provide compressed air, water, electrical and data signals, as well as weld and servo power to your tools with robot motion capabilities maintained. Axis 6 is allowed to rotate freely without limitations by hoses, cables or other obstacles and together with our hose packages there are no limits to axis 4 and 5 as well.

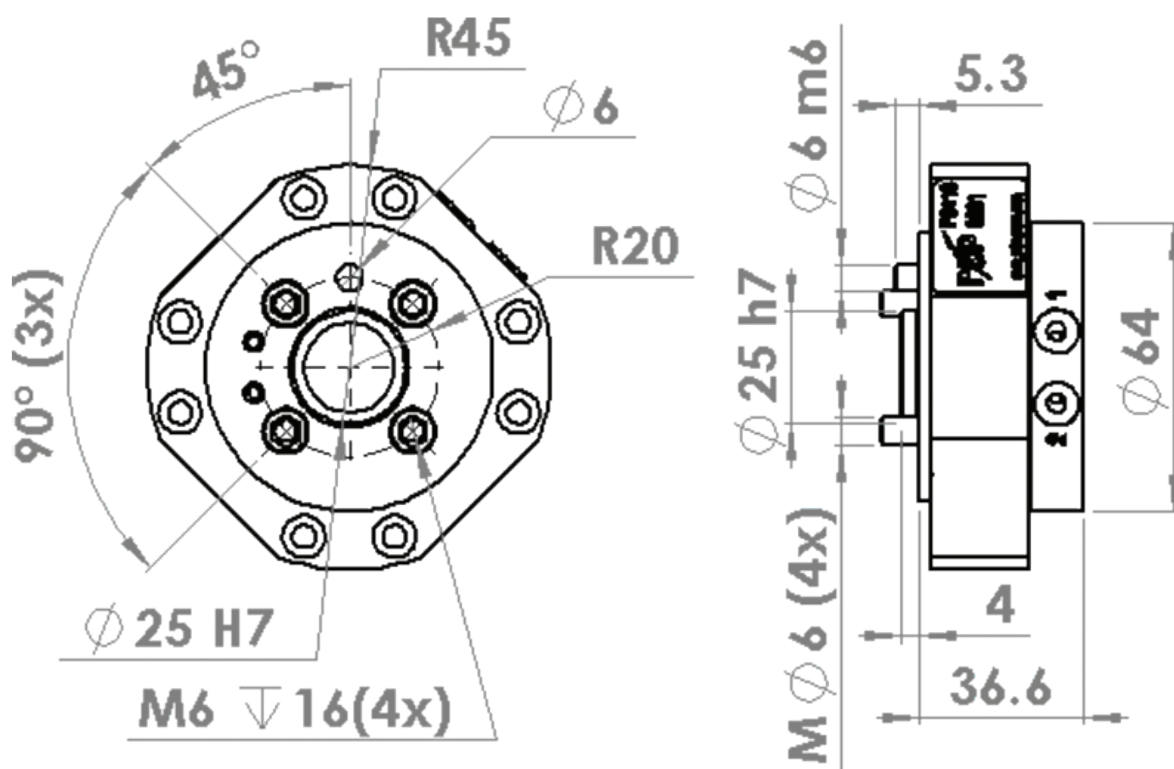
Technical data

Article	Part No	Handling capacity (kg)	Air ducts	Mechanical Interface	Electrical signals	Weight (kg)	Mz (Dynamic)	Mx/My (Dynamic)
Swivel								
S20-2	P0110A	20	2	ISO 9409-1 40-4-M6	-	0.35	± 100 Nm	± 100 Nm
S20-6	P0112A	20	6	ISO 9409-1 40-4-M6	-	0.65	± 100 Nm	± 100 Nm
S20-2E	P0111A	20	2	ISO 9409-1 40-4-M6	8	0.65	± 100 Nm	± 100 Nm
S20-6E	P0113A	20	6	ISO 9409-1 40-4-M6	8	0.95	± 100 Nm	± 100 Nm

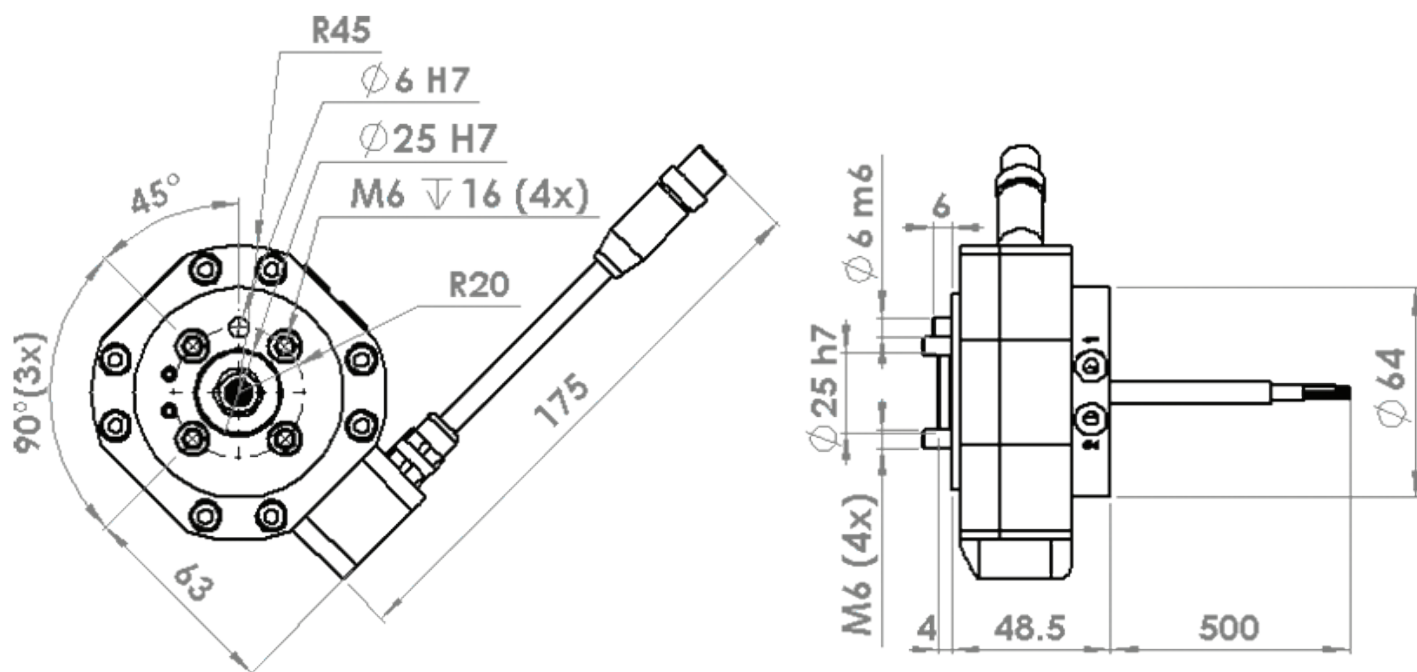
Air ducts	
Max air pressure	10 bar
Air quality	Oil-clean and waterless filtered air, max 25 µm particle content
Air flow / channel	150 l/min
Air connections	Robot side: 6 mm plastic hose or M5 Tool side: M5

Electrical Signals	
Max voltage	60V
Max current	1A
Connections	Robot side: M12 8P Tool side: 8 x 0.25mm² cable

S20-2



S20-2E



B0103-1_2



Robot System Products is a global leader in high-performance industrial robot peripheral products. Our expertise is to provide tested and field proven robotic system solutions that improve robot flexibility, utilization and uptime.

Visit us at www.rsp.eu.com

rsp robot system
products